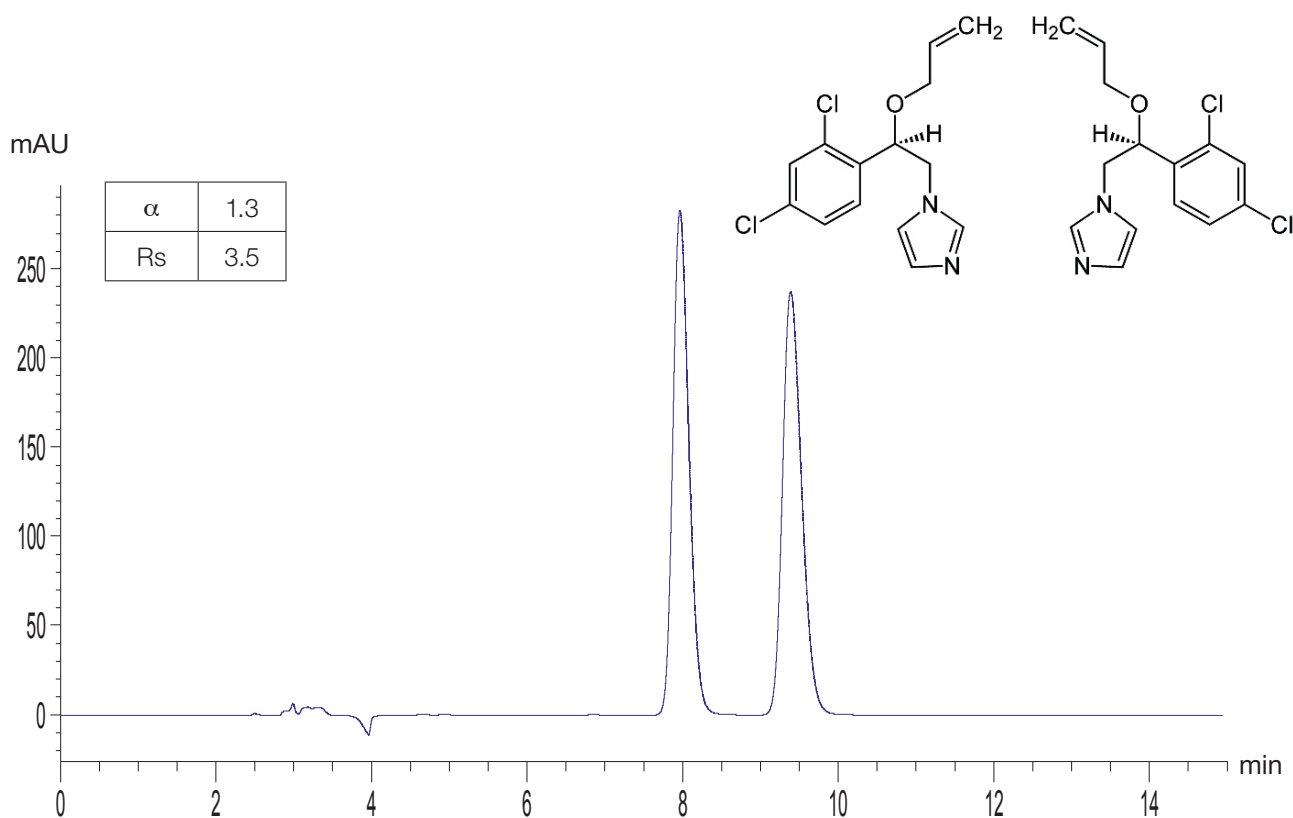


# Application Note



## Enilconazole (KSJ)



Column: CHIRAL ART Cellulose-SJ (5  $\mu$ m) 250 x 4.6 mm ID  
Part No.: KSJ99S05-2546WT  
Eluent: water / methanol / diethylamine (25/75/0.1)  
Flow rate: 1.0 mL/min  
Temperature: 35  $^{\circ}$ C  
Detection: UV at 220 nm  
Injection: 10  $\mu$ L (1 mg/mL)